

JAZZ



FEATURES

INTERIOR

- Corian Counter Tops*
- 12V AM/FM/CD/DVD & MP3 Player
- Day/Night Shades
- Mortise and Tenon Arched Cabinet Doors w/struts
- Full Extension Drawer Glides
- Galley Faucet w/Pull-Out Sprayer*
- Whole-House Filtration System
- 76" Ceiling Height in Bedroom
- 80" Queen Bed w/struts
- Pillow Top Mattress
- Residential Sofa w/Pull Out Drawer
- Radius Shower*
- Glass Shower Doors
- Porcelain Toilet w/Foot Pedal
- Brandy Maple Cabinets
- Oil Rubbed Bronze Hardware

EXTERIOR

- Welded Aluminum Framing
- Laminated Aluminum Framed Floors
- Fully Enclosed Underbelly w/Enclosed Valves
- Flex Foil Insulation in Pass-Through Storage
- Paddle-Latch Baggage Doors (Pass-Through)
- Turn EZ Design 90° (Engineered Front Cap)
- Equaflex Suspension*
- 30" Entry Door
- Electric Front Jacks
- EZ Lube Axels
- Dark Tinted Safety Glass Windows
- LP Quick Disconnect
- Black Tank Flush
- Outside Shower
- Exterior Speakers
- Large (Unobstructed) Pass-Through Storage
- Universal Docking Station (Hook-Ups Concealed)

OPTIONS

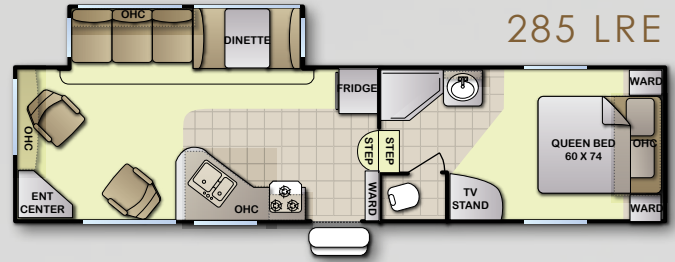
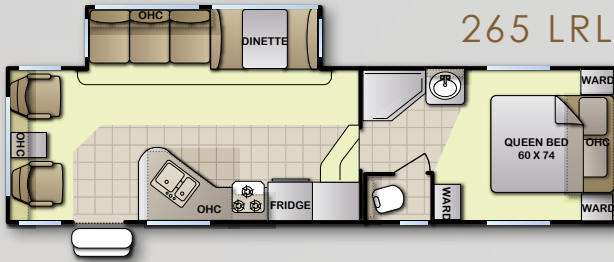
- Sofa Bed w/Air Mattress
- Aluminum Wheels
- 32" & 26" LCD/HD TV's
- Large 8 cubic foot Double Door Refrigerator
- Power Awning
- Electric Fireplace
- "J"-Lounge (315RK)
- Deluxe Recliners
- Dual Pane Windows
- Hitch Cover w/LED Light
- F/S Dinette & Storage Chairs

*N/A on Lite Models

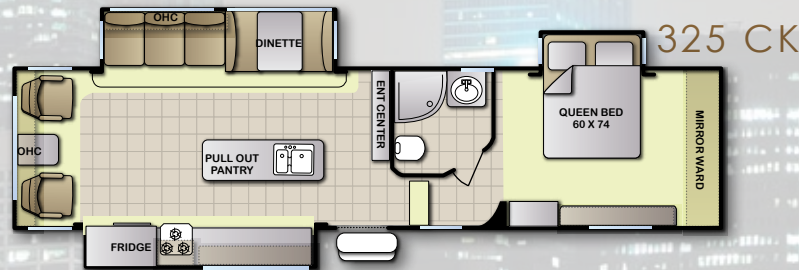
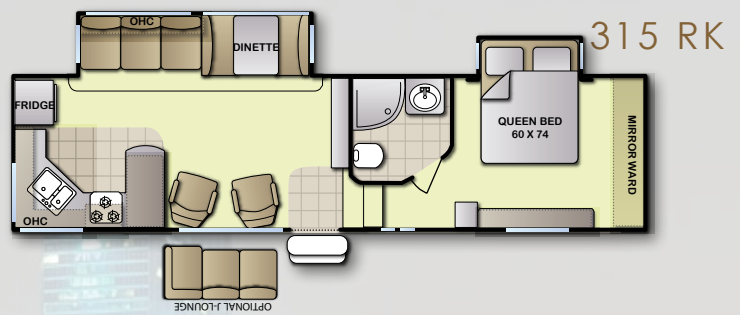
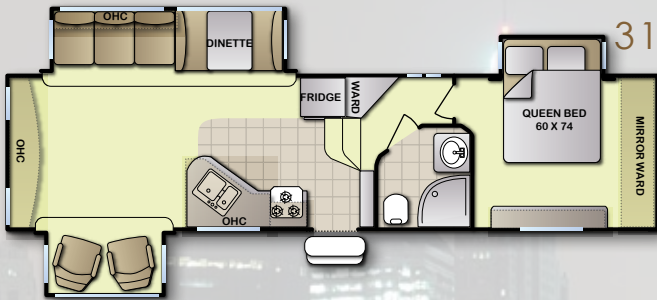
JAZZ



LITE FLOOR PLANS



MID PROFILE FLOOR PLANS



MODEL	FLOOR LENGTH	OVERALL WIDTH	OVERALL HEIGHT*	HEIGHT W/O A/C	GVWR (lbs)	DRY WEIGHT (lbs)	CCC (lbs)**	HITCH WEIGHT (lbs)	TIRE SIZE	FRESH WATER	GRAY/BLACK
265LRL	29'2"	96"	11'11"	11'7"	10,500	6,790	3,710	1,550	15"	75	90/45
285LRE	TBD	96'	TBD	TBD	TBD	TBD	TBD	TBD	15"	75	90/45
315RK	31'5"	96"	12'1"	11'9"	11,500	7,800	3,700	2,030	16"	75	90/45
315RE	33'2"	96'	12'1"	11'9"	12,500	8,750	3,750	2,290	16"	75	90/45
325CK	TBD	96"	TBD	TBD	TBD	TBD	TBD	TBD	16"	75	90/45

*From ground to top of A/C **Weight of water, LP gas and options are not included in Payload. ***All weights are estimated at time of printing



MVP RV
5300 Via Ricardo
Riverside, CA 92509
(951) 848 4288

WWW.MVPRV.COM

*All items subject to change without notice